

Drawing Path: E:\KCKEY\Projects\2015\040_N_Lyon Co_Child Develop Code Footprint\dwg\NLC Code Footprint.dwg
 Plotted at: Jul 30, 2015 - 2:25pm

66 x 0.2 = 13.2
 EXIT WIDTH CALCULATED = 13.2"
 EXIT WIDTH PROVIDED = 36"

44 x 0.2 = 8.8
 EXIT WIDTH CALCULATED = 8.8"
 EXIT WIDTH PROVIDED = 36"

34 x 0.2 = 6.8
 EXIT WIDTH CALCULATED = 6.8"
 EXIT WIDTH PROVIDED = 66"

56 x 0.2 = 11.2
 EXIT WIDTH CALCULATED = 11.2"
 EXIT WIDTH PROVIDED = 66"

132 SF / 100 = 1 OCCUPANTS
 OFFICE

370 SF / 100 = 3 OCCUPANTS
 KITCHEN

530 SF / 35 = 15 OCCUPANTS
 DAY CARE (AGES 2½ TO 5)

4157 SF / 35 = 118 OCCUPANTS
 DAY CARE (AGES 2½ TO 5)

4157 SF / 20 = 207 OCCUPANTS
 CLASSROOM (K THRU 8)

BUILDING #1 (CLASSROOMS)

CODE ANALYSIS:

ITEM	EXISTING FACILITY
DESCRIPTION OF OCCUPANCY	E
TYPE OF CONSTRUCTION	V-B
ALLOWABLE AREA	9,100 SF
ACTUAL AREA	6760 SF
ALLOWABLE STORIES	1
ACTUAL STORIES	2
ALLOWABLE HEIGHT	40 FT
ACTUAL HEIGHT	30 FT
NO. OF EXITS REQUIRED	2
NO. OF EXITS PROVIDED	3
READILY ACCESSIBLE	YES / ADAAG
OCCUPANT LOAD	137 / 211
STRUCTURAL PROTECTION	
EXTERIOR BEARING WALL	N
STRUCTURAL FRAME	N
STAIRWAYS AND SHAFTS	N
EXTERIOR OPENINGS	N
AREA SEPARATIONS	Y / 2 HOUR

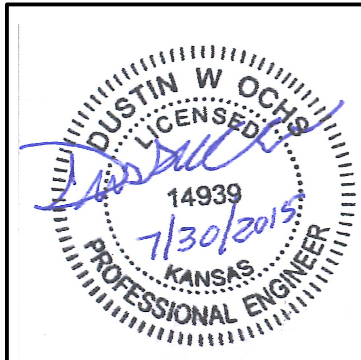
ACTIVE FIRE PROTECTION SYSTEMS

FIRE ALARM SYSTEM, FIRE EXTINGUISHERS,
 EXIT LIGHTS (BATTERY BACK-UP),
 EMERGENCY LIGHTS (BATTERY BACK-UP)

59 x 0.2 = 11.8
 EXIT WIDTH CALCULATED = 11.8"
 EXIT WIDTH PROVIDED = 72"

104 x 0.2 = 20.8
 EXIT WIDTH CALCULATED = 20.8"
 EXIT WIDTH PROVIDED = 72"

1 CODE FOOT PRINT
 Scale: 1" = 20'-0"



CENTRAL KANSAS ENGINEERING CONSULTANTS, L.L.C.
 CIVIL ENGINEERING - PLANNING - CONSTRUCTION MANAGEMENT
 17 West 5th Avenue, Topeka, KS 66601
 620.442.6827 FAX 620.442.6821

CK

TECH CAD SERVICES, LLC
 1701 West 21st Street, Topeka, KS 66604
 781.343.8888

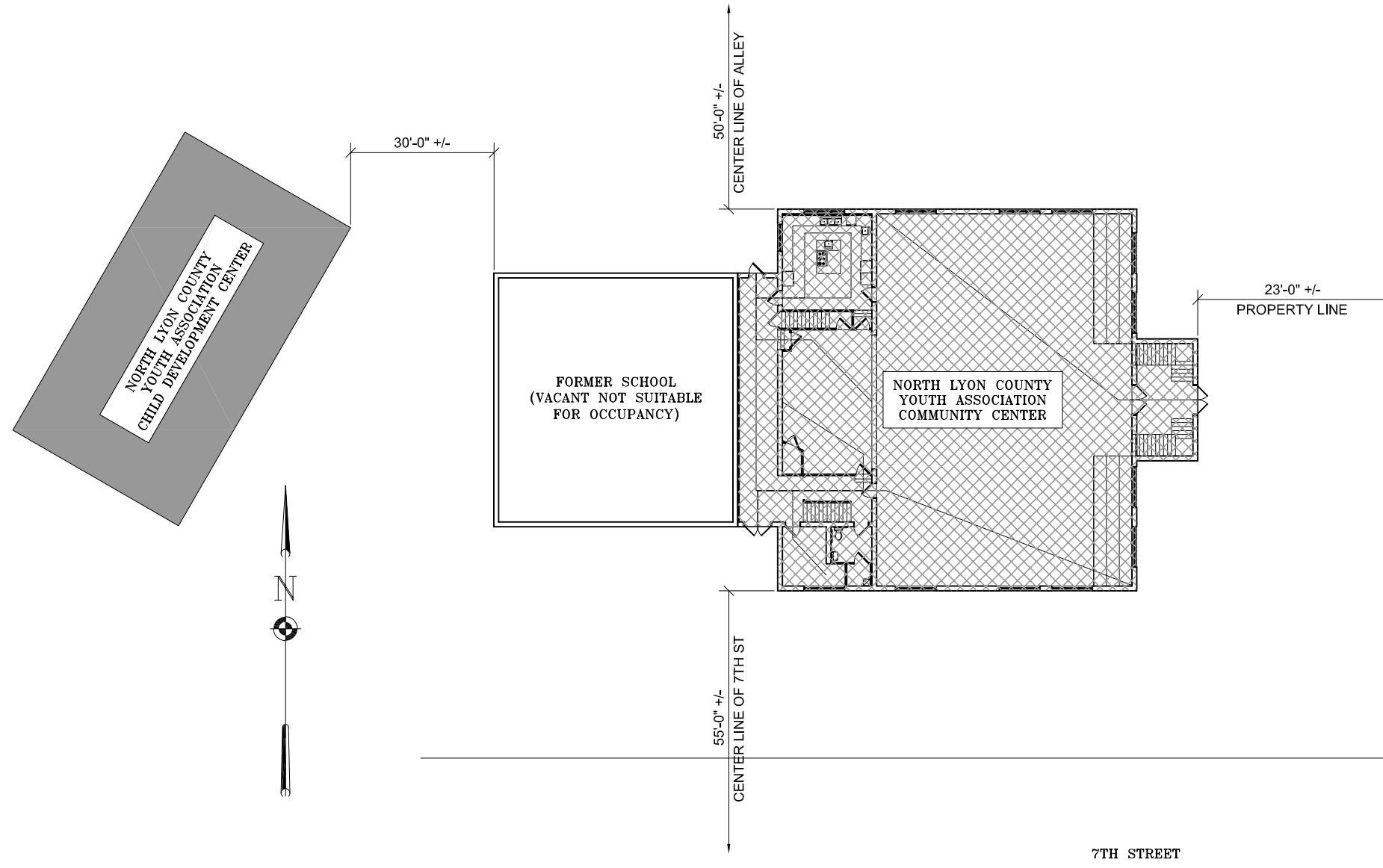
NO.	DATE	DESCRIPTION
1		
2		
3		
4		
5		

CODE FOOTPRINT
 NLC CHILD DEVELOPMENT
 NLC YOUTH ASSOCIATION

Date: 07/30/15
 Designed: DWO
 Drawn: KHG
 Checked: DWO
 Approved:
 Proj. No. 2015.040
 Sheet No:

2

Drawing Path: E:\KCEC\Projects\2015\040_N_Lyon Co_Child Develop Code Footprint\dwg\NLC Code Footprint.dwg
Plotted at: Jul 30, 2015 - 2:23pm



PROJECT DESCRIPTION & CODE ANALYSIS

PROJECT: USE GROUP CHANGE

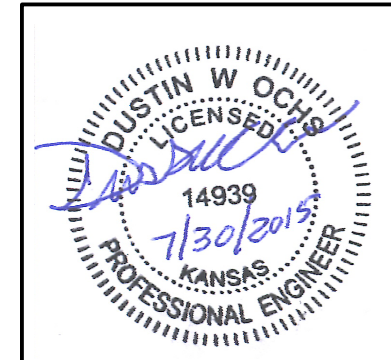
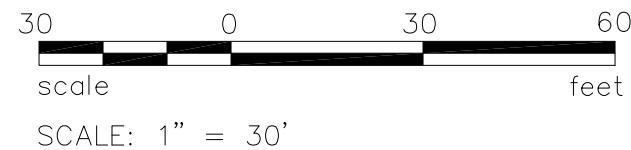
DESCRIPTION: THIS IS AN EXISTING 6,760 SQUARE FOOT COMMUNITY CENTER. THE OWNER INTENDS TO USE THE AREAS INDICATED ON THE PLANS AS A DAY CARE OCCUPANCY AS A SECONDARY USE TO THE COMMUNITY CENTER.

LEGAL DESCRIPTION	NORTH LYON COUNTY YOUTH ASSOCIATION 116 E. 7th ALLEN, KANSAS 66833
CODES	NFPA 101 LIFE SAFETY CODE 1997 KANSAS FIRE PROTECTION CODE 2006 INTERNATIONAL BUILDING CODE 2006 INTERNATIONAL MECHANICAL CODE 2006 INTERNATIONAL PLUMBING CODE 2005 NATIONAL ELECTRICAL CODE KDHE REGULATIONS FOR DAYCARE FACILITIES AMERICANS WITH DISABILITIES ACT
FACILITY	NORTH LYON COUNTY YOUTH ASSOCIATION - COMMUNITY CENTER 116 E. 7th ALLEN, KANSAS 66833
OWNER	NORTH LYON COUNTY YOUTH ASSOCIATION 116 E. 7th ALLEN, KANSAS 66833
FIRE DEPARTMENT	VOLUNTEER, CITY OF ALLEN
BUILDING DEPARTMENT	NONE
WATER SUPPLY	CITY OF ALLEN
DESIGNER	DUSTIN W. OCHS CENTRAL KANSAS ENGINEERING CONSULTANTS LLC 17 W 5TH AVENUE EMPORIA, KANSAS 66801

LEGEND

- EXIT
- 2-HOUR AREA SEPARATION
- 20-MINUTE RATED CORRIDOR
- SECONDARY USE
- EMERGENCY LIGHT
- EXIT SIGN
- FIRE EXTINGUISHER (WALL HUNG)
- FIRE ALARM CONTROL PANEL BOARD
- SMOKE DETECTOR
- FIRE HYDRANT

2 CODE SITE PLAN
Scale: 1" = 30'-0"



CENTRAL KANSAS ENGINEERING CONSULTANTS, L.L.C.
 CIVIL ENGINEERING - PLANNING - CONSTRUCTION MANAGEMENT
 17 West 5th Avenue Emporia, KS 66801
 620.843.6821 FAX 620.843.6821

CK

NO.	REV.	DATE	BY	APP.

CODE FOOTPRINT
 NLC CHILD DEVELOPMENT
 NLC YOUTH ASSOCIATION

Date: 07/30/15
 Designed: DWO
 Drawn: KHG
 Checked: DWO
 Approved:
 Proj. No. 2015.040
 Sheet No:

1