
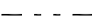












Drawing Path: E:\CKEC\Projects\2015\030_Knights Inn_Code Footprint\Code Footprint.dwg
Plotted at: Jun 16, 2015 - 11:46am

LEGEND

-  EXIT
-  2-HOUR AREA SEPARATION
-  1-HOUR OCCUPANCY SEPARATION
-  PROPOSED PROJECT
-  EMERGENCY LIGHT
-  EXIT SIGN
-  FIRE EXTINGUISHER (WALL HUNG)
-  FIRE ALARM CONTROL PANEL BOARD
-  HORN
-  MANUAL PULL STATION
-  SMOKE ALARM
-  FIRE HYDRANT

PROJECT DESCRIPTION & CODE ANALYSIS

PROJECT: FIRE ALARM PANEL UPGRADE

DESCRIPTION: THIS IS AN EXISTING 33,930 SQUARE FOOT TWO STORY STRUCTURE. THE CURRENT USE IS GROUP R-1, A-3, & A-4.

LEGAL DESCRIPTION FLINT HILLS EXTENDED STAY
3183 WEST HIGHWAY 50
EMPORIA, KANSAS

CODES NFPA 101 LIFE SAFETY CODE
1997 KANSAS FIRE PROTECTION CODE
2006 INTERNATIONAL BUILDING CODE
2006 INTERNATIONAL MECHANICAL CODE
2006 INTERNATIONAL PLUMBING CODE
2005 NATIONAL ELECTRICAL CODE
AMERICANS WITH DISABILITIES ACT

FACILITY FLINT HILLS EXTENDED STAY
3183 WEST HIGHWAY 50
EMPORIA, KANSAS

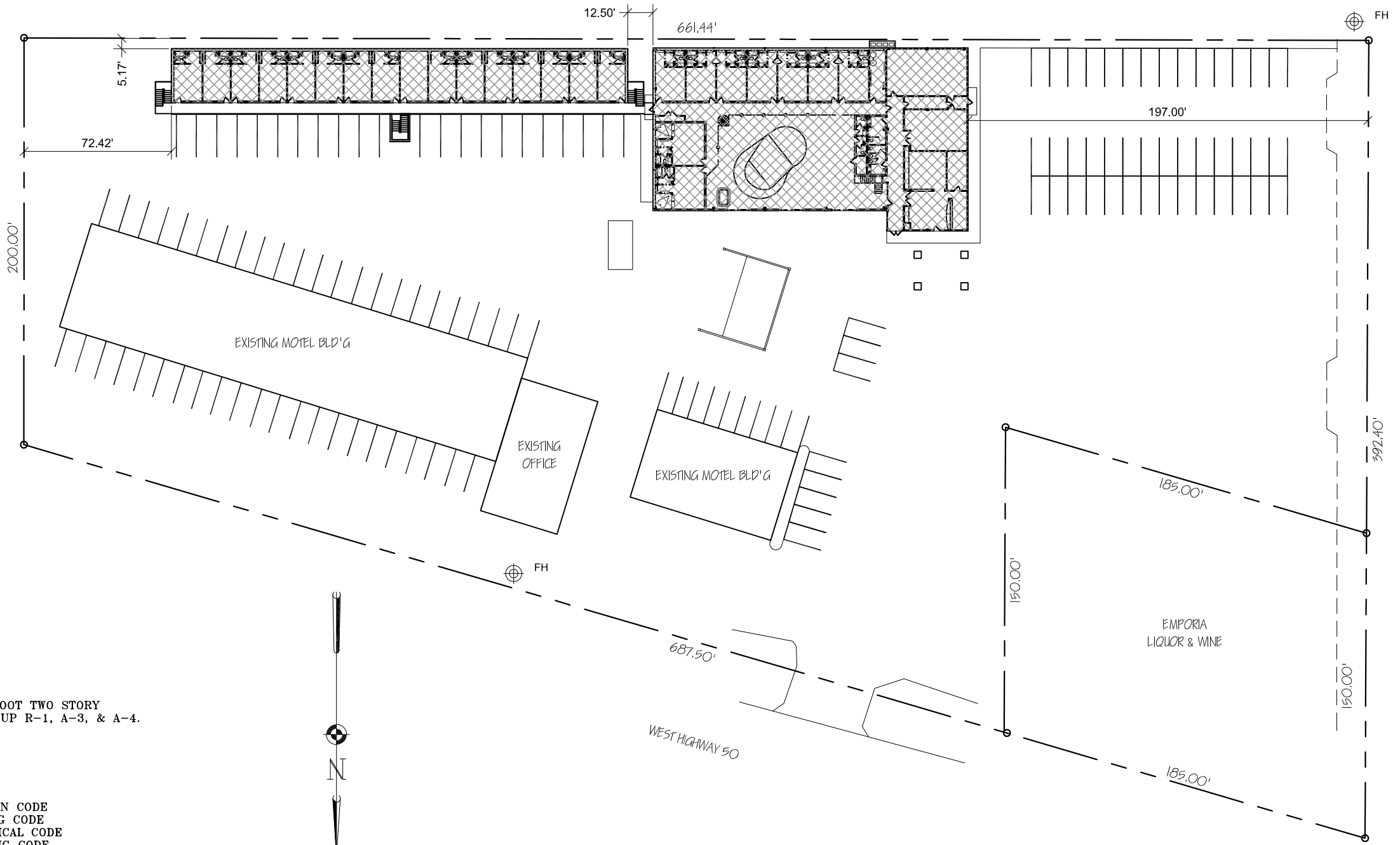
OWNER FLINT HILLS EXTENDED STAY
3183 WEST HIGHWAY 50
EMPORIA, KANSAS 66801
PHONE: 620-342-7822
FAX: 620-342-7859
EMAIL: SR74464@YAHOO.COM

FIRE DEPARTMENT EMPORIA FIRE DEPARTMENT, FIRE STATION #2

BUILDING DEPARTMENT EMPORIA CODE SERVICES

WATER SUPPLY EMPORIA WATER DEPARTMENT

DESIGNER DUSTIN W. OCHS
CENTRAL KANSAS ENGINEERING CONSULTANTS LLC
17 W 5TH AVENUE
EMPORIA, KANSAS 66801
EMAIL: DUSTIN@CKEC-DESIGN.COM




1 CODE SITE PLAN

Scale: 1" = 60'-0"



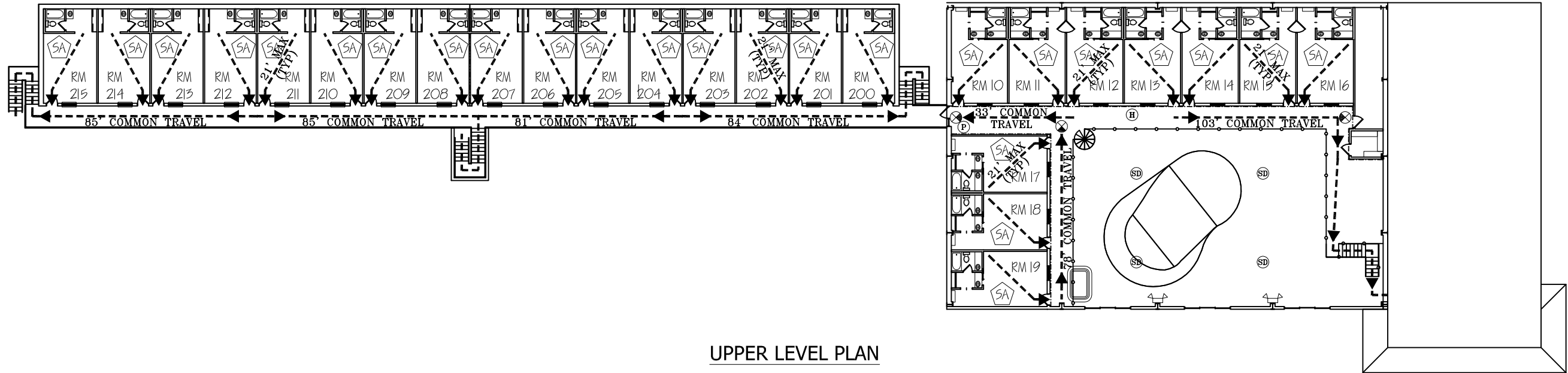
CENTRAL KANSAS ENGINEERING CONSULTANTS, L.L.C.
CIVIL ENGINEERING - PLANNING - CONSTRUCTION MANAGEMENT
 17 West 5th Avenue Emporia, KS 66801
 620.342.6821 FAX 620.342.6821



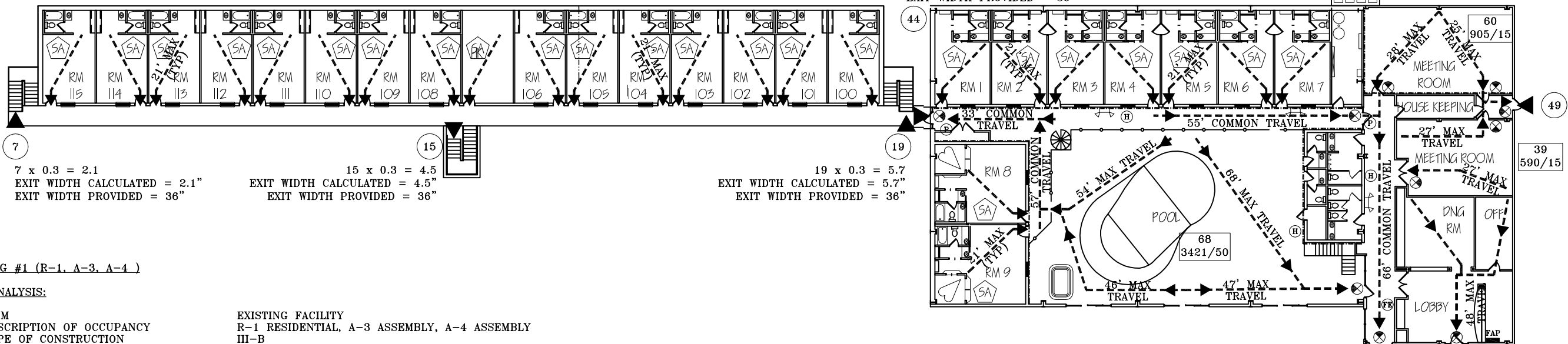
No.	Date	By	Appr.
1	JUNE 15, 2015	DWO	
SAMPLE ALARM ADDED TO LEGEND			
Revisions			

CODE FOOTPRINT
FLINT HILLS EXTENDED STAY
3183 WEST HIGHWAY 50

Date:	05/20/15
Designed:	DWO
Drawn:	KHG
Checked:	DWO
Approved:	
Proj. No.:	2015.030
Sheet No.:	1



UPPER LEVEL PLAN



MAIN LEVEL PLAN

1 CODE FOOT PRINT
Scale: 1" = 30'-0"



BUILDING #1 (R-1, A-3, A-4)

CODE ANALYSIS:

ITEM	EXISTING FACILITY
DESCRIPTION OF OCCUPANCY	R-1 RESIDENTIAL, A-3 ASSEMBLY, A-4 ASSEMBLY
TYPE OF CONSTRUCTION	III-B
ALLOWABLE AREA	16,000 SF R-1 9,500 SF A-3 9,500 SF A-4
TOTAL ALLOWABLE AREA	32,000 SF R-1 9,500 SF A-3 9,500 SF A-4
ACTUAL AREA	14,253 SF R-1 905 SF A-3 3,421 SF A-4
MIXED OCCUPANCY RATIO	$14,253/32,000 + 905/9,500 + 3,421/9,500 = 0.90 < 1.0$
ALLOWABLE STORIES	4 R-1 2 A-3 2 A-4
ACTUAL STORIES	2 R-1 1 A-3 1 A-4
ALLOWABLE HEIGHT	40 FT
ACTUAL HEIGHT	23 FT
NO. OF EXITS REQUIRED	2
NO. OF EXITS PROVIDED	7
READILY ACCESSIBLE	YES
OCCUPANT LOAD	216
STRUCTURAL PROTECTION	
EXTERIOR BEARING WALL	N
STRUCTURAL FRAME	N
STAIRWAYS AND SHAFTS	N
EXTERIOR OPENINGS	N
OCCUPANCY SEPARATIONS	Y
CORRIDOR CONSTRUCTION	N

ACTIVE FIRE PROTECTION SYSTEMS
FIRE ALARM SYSTEM, FIRE EXTINGUISHERS

49 x 0.2 = 9.8
EXIT WIDTH CALCULATED = 9.8"
EXIT WIDTH PROVIDED = 36"

92 x 0.2 = 18.4
EXIT WIDTH CALCULATED = 18.4"
EXIT WIDTH PROVIDED = 72"

5 x 0.2 = 1.0
EXIT WIDTH CALCULATED = 1.0"
EXIT WIDTH PROVIDED = 36"

CENTRAL KANSAS ENGINEERING CONSULTANTS, L.L.C.
ONE INDEPENDENCE - PLANNING - CONSTRUCTION MANAGEMENT
17 West 5th Avenue, Lawrence, KS 66044
620.842.6621 FAX 620.842.6621



No.	Date	By	App.
1	JUNE 15, 2015	DWO	
2			
3			
4			
5			

CODE FOOTPRINT
FLINT HILLS EXTENDED STAY
3183 WEST HIGHWAY 50

Date: 05/20/15
Designed: DWO
Drawn: KHG
Checked: DWO
Approved:
Proj. No. 2015.030
Sheet No:

Drawing Path: E:\KKECV\Projects\2015\030_Knights Inn_Code Footprint\code footprint.dwg
Plotted at: Jun 15, 2015 8:10:28am