

EQUIPMENT SCHEDULE

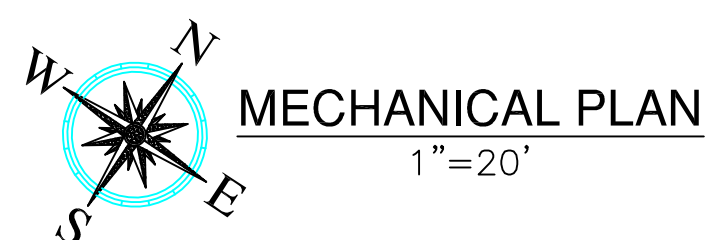
- UH-1 NEW GAS FIRED UNIT HEATER, LENNOX #LF24-250A 250 MBH TYPICAL (8 HEATERS REQUIRED)
- UH-2 EXISTING GAS FIRED UNIT HEATER, LENNOX #LF24-250A 250 KBTUH TYPICAL (3 HEATERS).
- EF-3 COOLAIR #JDC-48 UP BLAST EXHAUST FAN WITH 7.5 HP 460v 3P MOTOR STARTER ON 20" HIGH CURB (6 REQUIRED).
- EF-L ENERTECH #CFL-D-6 96"x96" ALUMINUM MOTORIZED INTAKE LOUVER WITH INSECT SCREEN. UP 4 FEET (6 REQUIRED).

CONSTRUCTION NOTES:

1. REFER TO ELECTRICAL DRAWINGS FOR LOCATIONS OF STARTERS FOR EF-1 EXHAUST FANS. EXHAUST FANS SHALL BE MANUALLY STARTED AND STOPPED AT THE STARTER.
2. ALL INTERLOCK WIRING TO BE COMPLETED BY MECHANICAL CONTRACTOR.
3. NEW AIR INTAKE LOUVERS AND ASSOCIATED BLANK OFF PANELS TO MATCH EXISTING LOUVERS. PANELS SHALL BE INSULATED WITH 2" RIGID INSULATION, AND FINISHED WITH METAL CLADDING ON BOTH SIDES.
4. UNIT HEATERS SHALL BE MOUNTED AT THE SAME ELEVATION OF THE HEATERS IN THE EXISTING BUILDING.

CONSTRUCTION NOTES:

1. EXISTING GAS FIRED UNIT HEATER SHALL BE RELOCATED AS SHOWN. ASSOCIATED THERMOSTAT SHALL BE RELOCATED, EXISTING GAS LINE SHALL BE EXTENDED, EXTEND EXISTING FLUE AS REQUIRED.
2. EXISTING 96"x96" AIR INTAKE LOUVER WITH MOTORIZED DAMPER AND BLANK OFF PANEL SHALL BE RELOCATED AS FROM EXISTING BUILDING.
3. OPENING SHALL BE UNOBSTRUCTED UPON THE REMOVAL OF THE LOUVER.
4. INSTALL NEW GAS METER.
5. INSTALL NEW 10LB GAS PIPING.
6. ALL GAS PIPING SHALL BE WELDED, INSTALL GAS PIPING AS HIGH AS POSSIBLE.
7. GAS PRESSURE REGULATING VALVE, CAST IRON BODY WITH INTERNAL VALVE. VALVE BODY SHALL BE THE SAME SIZE OF HIGH PRESSURE PIPING. REGULATOR SHALL BE CAPABLE OF REDUCING PRESSURE FROM 10" TO 7-10 W.C. WITH 1" W.C. DROP AT RATED CAPACITY AS SHOWN ON THE DRAWINGS.



	GREGORY E. HARRIS P.E. 8633 UTOPIA PARKWAY APT. 10 RAYTOWN, MISSOURI 64138	COPYRIGHT NOTICE THIS LAYOUT DESIGN IS AN UNPUBLISHED WORK AND Evergreen Design/Build OF EMPORIA, KANSAS HEREBY RECEIVES ITS COMMON LAW RIGHT PURSUANT TO TITLE 17, SECTION 2 OF THE UNITED STATES CODE TO PREVENT ANY UNAUTHORIZED COPYING, PUBLICATION, CONSTRUCTION OR OTHER USE OF THIS DESIGN AND TO OBTAIN DAMAGES THEREAFTER. Title and ownership to all drawings prepared by the contractor remains the property of the contractor. The documents are not intended or represented as being available for reuse by either the owner or others. The contractor is relieved of any liability with the connection of any unapproved usage of these documents.		SIMMONS EMPORIA, KANSAS
		SCALE AS NOTED 9/28/17 REVISED	BY KHG JOB # WAREHOUSE ADDITION NO. M1.0	